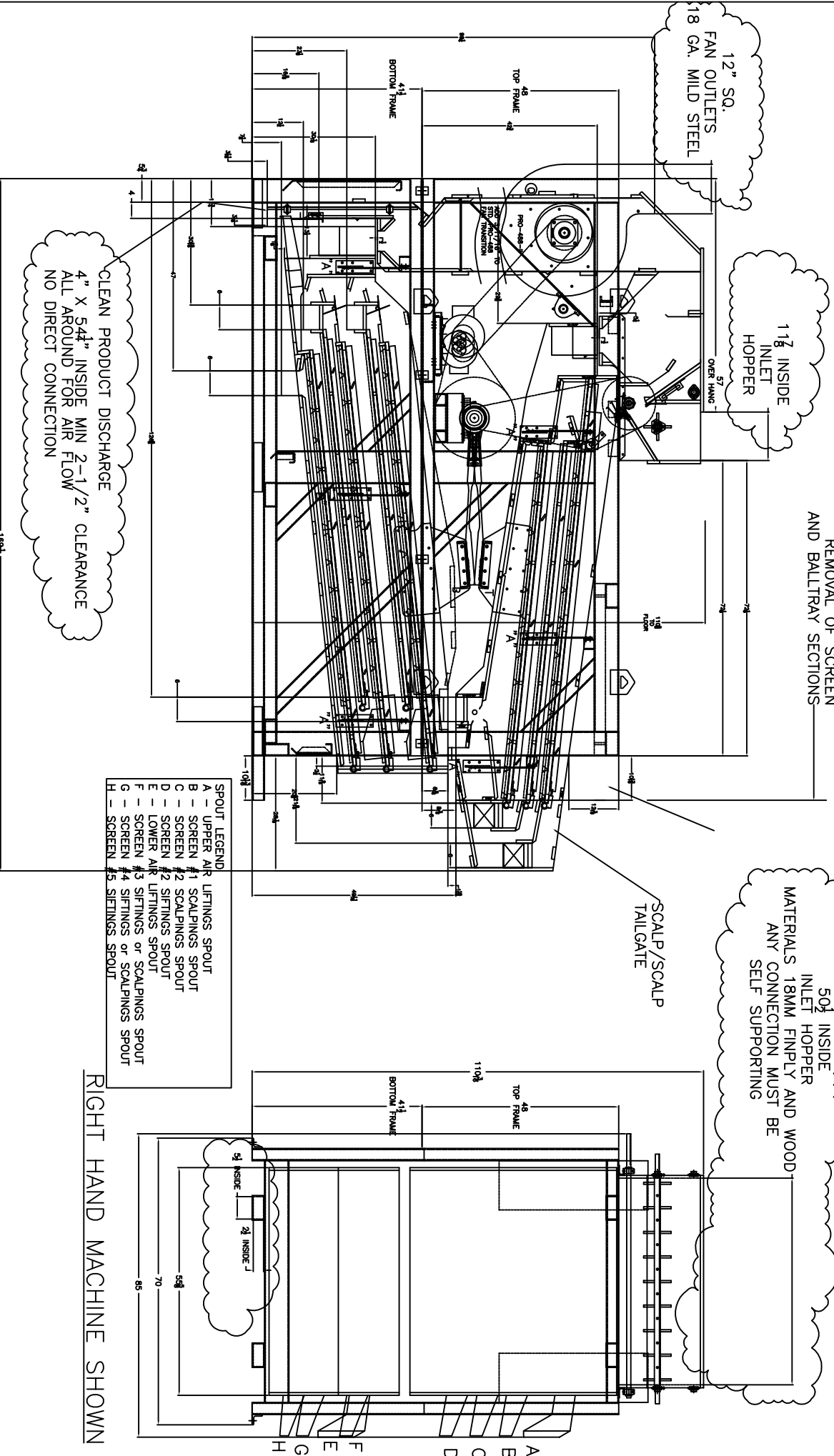


RH MACHINE FANS VERTICAL STD HOPPER



ALLOW A MINIMUM OF 60\"/>

50 1/2\"/>

CLEAN PRODUCT DISCHARGE
 4\"/>

- SPOUT LEGEND**
- A - UPPER AIR LIFTINGS SPOUT
 - B - SCREEN #1 SCALPING SPOUT
 - C - SCREEN #2 SCALPING SPOUT
 - D - SCREEN #2 SIFTINGS SPOUT
 - E - LOWER AIR LIFTINGS SPOUT
 - F - SCREEN #3 SIFTINGS or SCALPING SPOUT
 - G - SCREEN #4 SIFTINGS or SCALPING SPOUT
 - H - SCREEN #5 SIFTINGS SPOUT

RIGHT HAND MACHINE SHOWN

REVISIONS

REV	DESCRIPTION	DATE	REV. BY	MACHINE:
A				CENTURY/PRO 588
B				
C				
D				
E				

Crippen
 Manufacturing Company

DESCRIPTION: FLOOR PLAN w/
 TYPE A HOPPER

DATE: 8/28/13

DWG NO.: CP-588 Floor Plan

SCALE: NTS

REV. #1A



